

## PACKAGE CONTENTS

- Universal transfer cable
- *Quick Setup Guide*

## FEATURES

- High-speed data transfer
- Windows-to-Windows compatibility
- Mac-to-Mac compatibility
- Windows-to-Mac (and Mac-to-Windows) compatibility
- Auto-launching software built into the cable; no CDs or downloads required

## SYSTEM REQUIREMENTS

- Windows® 8 (not including Windows RT), Windows® 7, Windows Vista®, Windows® XP, or Windows® 2000 SP3
- Mac OS X v10.5 or later
- Intel® Pentium® II or higher/PowerPC G4 processor or later
- 512 MB RAM or higher
- At least 100 MB hard drive space available
- Available USB port on both computers

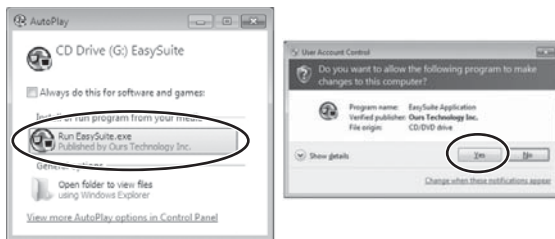
Before using your new product, please read these instructions to prevent any damage.

## GETTING STARTED

Follow the steps below to launch the software on **each** Windows or Mac computer that you are connecting. For instance, if you connect a PC to a Mac, follow the PC setup steps on your PC and the Mac setup steps on your Mac.

### LAUNCHING THE SOFTWARE ON WINDOWS PCS (EASYSUITE SOFTWARE)

- Connect the USB cable from one computer to the other. The software detects the connection.
- **Windows XP and Windows 2000:** The EasySuite software opens. If it does not open, open **My Computer**, select the drive letter of the EasySuite cable/software and double-click the *EasySuite* icon.
- **Windows 8, Windows 7, and Windows Vista:** The *Autoplay* menu opens. Click **Run EasySuite.exe**, then click **Yes** to allow the program to make changes. If *Autoplay* does not open, open **My Computer**, select the drive letter of the EasySuite cable/software and double-click the *EasySuite* icon.



### LAUNCHING THE SOFTWARE ON MAC COMPUTERS (GO!BRIDGE SOFTWARE)

- 1 Connect the USB cable from one computer to the other. The software detects the connection.
- 2 Click the EasySuite disc icon on the desktop of your Mac. If the EasySuite CD icon is not on your desktop, launch Finder and select the EasySuite CD from the list of drives and folders on the left.



- 3 Click the Go!Bridge software icon to launch the Mac version of the software.



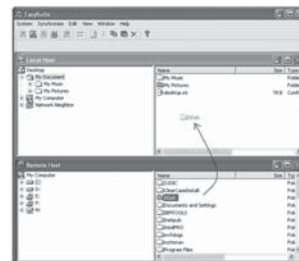
**Note:** "Bridge is not running" will be displayed if GO!Bridge (for Mac OS) or EasySuite (for Windows OS) is not open on both computers.



### Transferring Files Between Computers

When the EasySuite or GO!Bridge software opens, there will be two windows, Local Host and Remote Host. Local Host is the computer you are currently using. Remote Host is the computer you are connected to via the cable. Both the EasySuite Software and GO!Bridge software allow you to transfer files using the same techniques. There are two ways to transfer files with EasySuite or GO!Bridge:

- **Option 1:** Select the file to be transferred on either the local or remote computer, then drag and drop it into the destination directly.



### OR

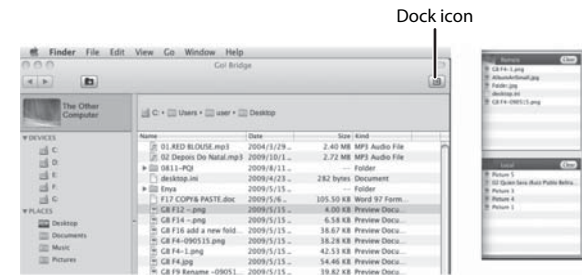
- **Option 2:** You can Copy and Paste the files to be transferred by selecting the files using Ctrl+C, then pasting the files in the destination folder using Ctrl+V, or by using the same commands on the *Edit* menu.

**Note:** If you get an error message on your Mac system stating that you can not write files to a specific folder, then choose another folder that does not have user restrictions. Or you may consult your operating system documentation on how to modify write permissions on a certain folder.

## Transferring multiple files using the Dock

You can collect files on the Dock in GO! Bridge, then drag them all to the destination at once instead of transferring a single file.

To display files in the Dock, click the Dock icon.



## TROUBLESHOOTING

Visit [www.insigniaproducts.com](http://www.insigniaproducts.com) for details.

## LEGAL NOTICES

### FCC Statement

This device complies with Part 15 of the FCC Rules. Operation is subject to the following two conditions: (1) this device may not cause harmful interference, and (2) this device must accept any interference received, including interference that may cause undesired operation.

### FCC Caution

Changes or modifications not expressly approved by the party responsible for compliance could void the user's authority to operate this equipment.

**Note:** This equipment has been tested and found to comply with the limits for a Class B digital device, pursuant to Part 15 of the FCC Rules. These limits are designed to provide reasonable protection against harmful interference in a residential installation. This equipment generates, uses and can radiate radio frequency energy and, if not installed and used in accordance with the instructions, maybe cause harmful interference to radio communications. However, there is no guarantee that interference will not occur in a particular installation. If this equipment does cause harmful interference to radio or television reception, which can be determined by turning the equipment off and on, the user is encouraged to try to correct the interference by one or more of the following measures:

- Reorient or relocate the receiving antenna.
- Increase the separation between the equipment and receiver.
- Connect the equipment into an outlet on a circuit different form that to which the receiver is connected.
- Consult the dealer or an experienced radio/TV technician for help

## Canadian Notice

CAN ICES-3 (B)/NMB-3 (B)

## ONE-YEAR LIMITED WARRANTY

For complete warranty, visit [www.insigniaproducts.com](http://www.insigniaproducts.com).

## CONTACT ROCKETFISH

For customer service, call 1-877-467-4289 (U.S. and Canada) or

01-800-926-3000 (Mexico)

[www.insigniaproducts.com](http://www.insigniaproducts.com)

INSIGNIA is a trademark of Best Buy and its affiliated companies. Registered in some countries.  
Distributed by Best Buy Purchasing, LLC  
7601 Penn Ave South, Richfield, MN 55423 U.S.A.  
©2014 Best Buy. All rights reserved.  
Made in China